

Series KP



Power Wirewound Resistors radial, fibre glass core, coated

Specification

Type		290	292	294	296	298
Style		0518	0523	0533	0543	0553
Power rating P_{70}	W	2,0	4,0	5,0	6,5	8,0
Resistance range	Ω	R10...7K5	R15...11K	R27...20K	R39...27K	R47...36K
E-series		E 24/E 12	E 24/E 12	E 24/E 12	E 24/E 12	E 24/E 12
Tolerance	%	± 10 $\pm 5 \geq R20$	± 10 $\pm 5 \geq R30$	± 10 $\pm 5 \geq R47$	± 10 $\pm 5 \geq R68$	± 10 $\pm 5 \geq R91$
Temperature coefficient	$10^{-6} * K^{-1}$			- 80 ... + 500		
max. cont. working voltage	V_{RMS}		$\sqrt{P_{70} \cdot R}$	for all styles		
Insulation voltage (1min.)	V_{RMS}			max. 75		
Insulation resistance	Ω			not insulated		
Derating linear	$^{\circ}C$			70 ... 350 (0W)		
Climatic category				55/200/56		
Temperature range	$^{\circ}C$			- 55 ... 350		
Thermal resistance	KW^{-1}	110	70	60	50	40
Failure rate (Total, ϑ_0 max. 60% conf. lev.)	$10^{-9} * h^{-1}$			appr. 100, depends on value		
Endurance (P_{70} , 70 $^{\circ}C$, 1000h)	$\left[\frac{\Delta R}{R} \right]$ %			$\pm 3,0$ average		
Damp heat, steady state (40 $^{\circ}C$, 93% r. h., 56d)	$\left[\frac{\Delta R}{R} \right]$ %			$\pm 2,0$		
Climatic sequence	$\left[\frac{\Delta R}{R} \right]$ %			$\pm 2,0$		
Terminal strength	$\left[\frac{\Delta R}{R} \right]$ %			$\pm 1,0$		

Distributed by ARTLAND.
Tel: 852-26900182 Fax: 852-26900213
E-mail: sales@artland-tech.com
www.artland-tech.com

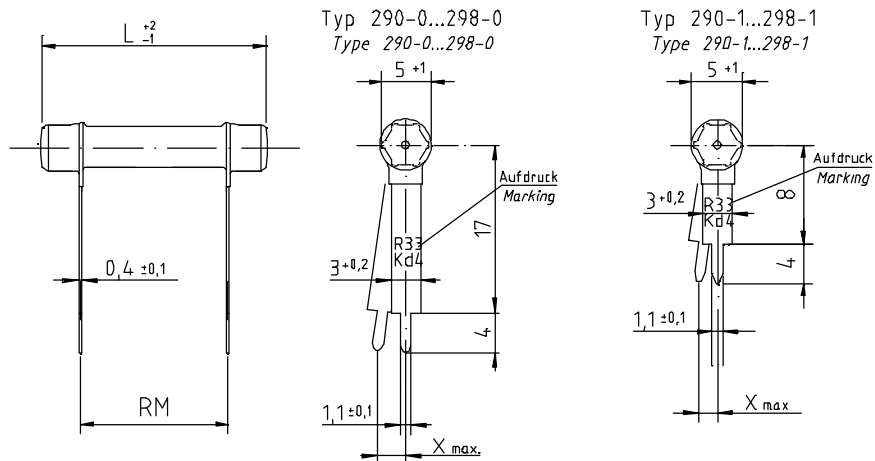
Series KP



Power Wirewound Resistors radial, fibre glass core, coated

Type		290	292	294	296	298
Terminal tensile strength	N	40				
Resistance to soldering heat (260°C, 10s)	$\left[\frac{\Delta R}{R} \right] \%$	$\pm 0,2$ typ.				
Solderability		solderable according to IEC 60068-2-20Ta				
Marking		on termination; value 3 digits, Tolerance, Production date code				

Dimensions in mm:



290-0/1	18,2	10
292-0/1	23,3	15
294-0/1	33,4	25
296-0/1	43,5	35
298-0/1	53,7	45

Type	RM Tolerance	Xmax.
29x-0	$\pm 1,0$	3,0
29x-1	$\pm 0,8$	1,7

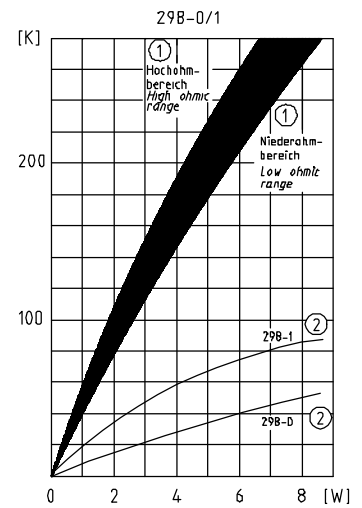
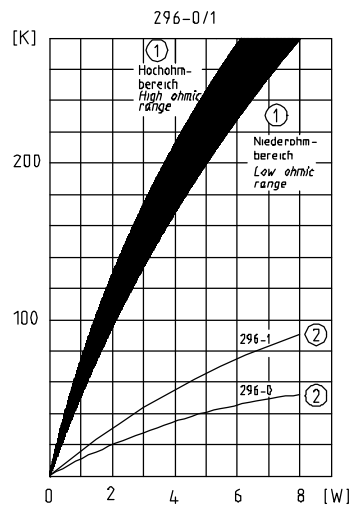
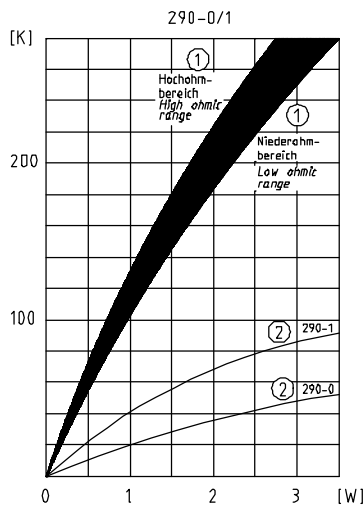
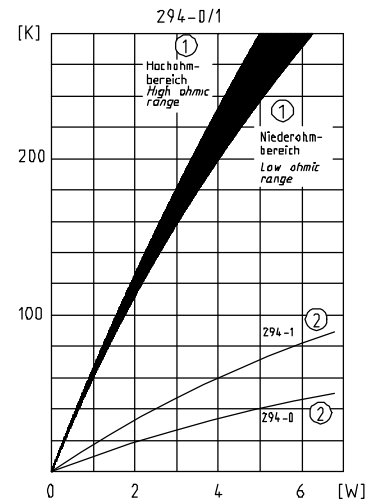
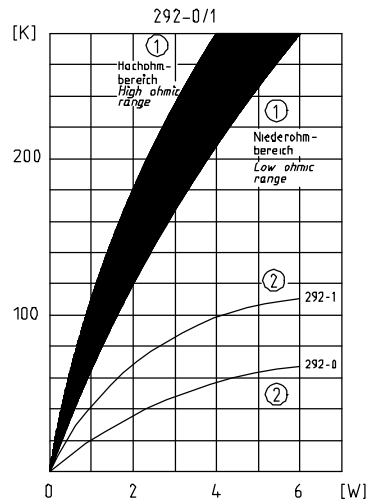
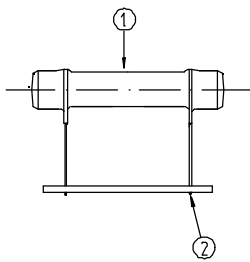
Distributed by ARTLAND.
 Tel: 852-26900182 Fax: 852-26900213
 E-mail: sales@artland-tech.com
 www.artland-tech.com

Series KP



Power Wirewound Resistors radial, fibre glass core, coated

Temperatur rise:
(hot-spot + solder joints)



Distributed by ARTLAND.
Tel: 852-26900182 Fax: 852-26900213
E-mail: sales@artland-tech.com
www.artland-tech.com

Series KP



Power Wirewound Resistors radial, fibre glass core, coated

Packaging:

Type	Packaging	Pieces	Pack.-Code
290-0 290-1	bulk	250 450	BZ
292-0 292-1	bulk	200 300	BZ
294-0 294-1	bulk	100 200	BZ
296-0 296-1	bulk	100 125	BZ
298-0 298-1	bulk	75 100	BZ

Ordering example:

294-1	1K3	5%	BZ
Type	Value	Tolerance	Pack.-Code

Distributed by ARTLAND.
Tel: 852-26900182 Fax: 852-26900213
E-mail: sales@artland-tech.com
www.artland-tech.com